

OWN
CA
REAL
ESTATE
TODAY

FOR SALE

DREAM
DEAL
IS
HERE
TODAY

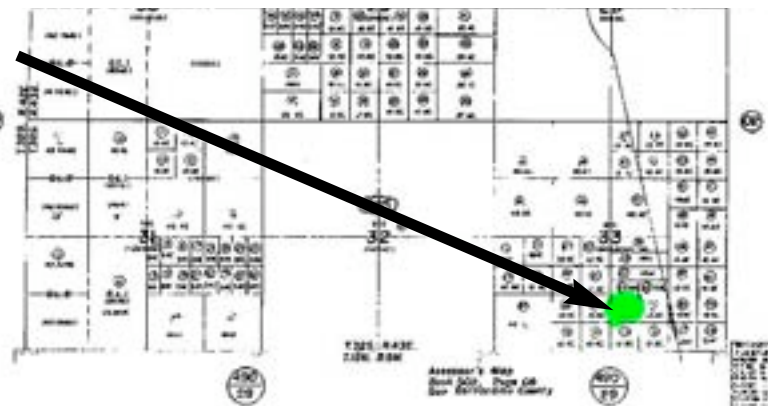


10 ACRES IN SECTION 33

ATOLIA, SAN BERNADINO COUNTY, CA

PAYMENTS OF \$268 PER MONTH !!! DOWN PAYMENT OF \$5,985 - THE OWNER WILL CARRY THE LOAN & SUBORDINATE TO A CONSTRUCTION LOAN, MINIMAL QUALIFYING!!!

VACANT PARCEL KNOWN AS APN # 0502-085-70, DISTRICT 14, SECTION 33, ATOLIA, CA. ADJACENT TO THE TOWN OF ATOLIA NEAR HIGHWAY 395. NEXT TO HOFFMAN RD. CLOSE TO CALIFORNIA CITY SHOPPING. NEAR CUDDLEBACK LAKE, KOEHN LAKE, RAND MOUNTAINS, EL PASO MOUNTAINS, CHINA LAKE AND THE KERN COUNTY LINE. SHORT DRIVE TO RED ROCK CANYON STATE PARK, SEQUOIA NATIONAL PARK AND THE L.A. COUNTY LINE.



PRICE \$39,900
CALL AGENT FOR:
INFO, FINANCING OR APPT.
BANKERS INVESTMENT GROUP
ALAN PIERCE
714-791-4454
alanpierce.com